

# 208-01 2-arm flap puller "Economy" with oscillating and height-adjustable puller legs



## DESCRIPTION

The 2-armed lug puller "Economy" with oscillating and height-adjustable puller legs is used for pulling off bearings, gears and washers in all common sizes for handcraft, workshop and industry. The oscillating and curved puller legs adapt to any installation situation and can be used universally due to the adjustable clamping depth

## RANGE OF APPLICATION

For pulling off bearings, gear wheels and discs

## BENEFIT

- Adjustable puller legs for individual adjustment of the clamping depth thanks to multiple holes in the puller legs
- Oscillating puller legs offer a wide range of adjustment possibilities
- Safe positioning of the spindle due to rotatable spindle tip both on smooth surfaces and for centring (Switch Technology)
- Anti-slip device on the spindle head for safe working with spanners
- Spindle run-out to protect the thread

## OPERATION

- Apply the puller leg to the part to be removed from the outside
- Swing the claws under the part
- Pull the spindle manually to fix it
- Move the hexagon on the spindle head with a ratchet or a combination spanner until the component is loosened

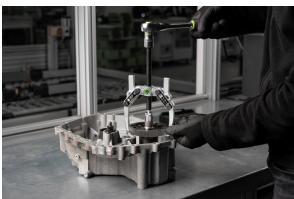
## MASTER DATA

GTIN	4021176432408
Country of origin	DE
Material	Tool steel
Series	208
Net weight [kg]	1 kg
Gross weight [kg]	
Package contents	1 piece
Packaging Act	PAP 21

## SPARE PARTS

- 208-01-125-P\_2 Trigger hook (pair)
- 201-1-T\_Traverse
- 614160\_Mechanical pressure spindle

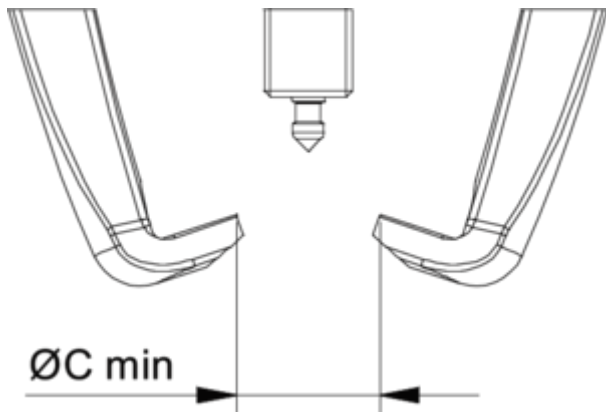
APPLICATION IMAGE



DETAIL IMAGE

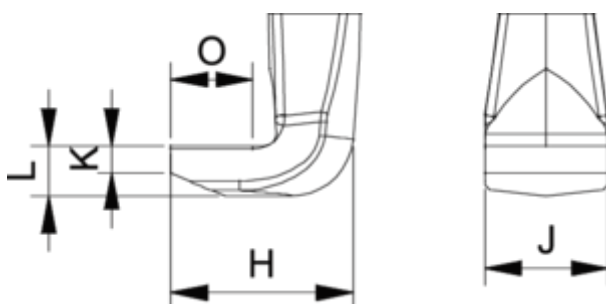


# 2-arm flap puller "Economy" with oscillating and height-adjustable puller legs



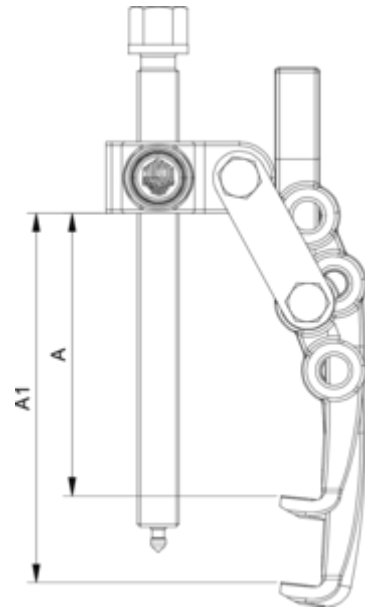
Abbreviation	Attribut	Wert
X	Total width [mm]	196 mm
Y	Total depth [mm]	30 mm
Z	Total height [mm]	181 mm
A	Clamping depth outside pull-off [mm]	95 mm
S1	Width across flats [mm]	17 mm
Cmin	Span outside pull-off (min.) [mm]	0 mm
Cmax	Span outside pull-off (max.) [mm]	170 mm
K	Hook root thickness at the tip (claw thickness K) [mm]	3,5 mm
J	Hook base width (claw width J) [mm]	16 mm
O	Hook base depth usable (claw depth usable O) [mm]	13 mm
H	Total hook root depth (total claw depth H) [mm]	26 mm
L	Total claw thickness (L+1mm) (claw distance to base) [mm]	10 mm
Emin	Span inside pull-out (min.) [mm]	
Emax	Span inside pull-out (max.) [mm]	
Tmax	Max. torque [Nm]	20 Nm
Fmax	Max. tractive force [t]	2 t
Fmax	Max. tensile force [kN]	20 kN
S1	Width across flats connecting nut [mm]	

Abbreviation	Attribut	Wert
X	Total width [mm]	196 mm
Y	Total depth [mm]	30 mm
Z	Total height [mm]	181 mm
A	Clamping depth outside pull-off [mm]	95 mm
S1	Width across flats [mm]	17 mm
Cmin	Span outside pull-off (min.) [mm]	0 mm
Cmax	Span outside pull-off (max.) [mm]	170 mm
K	Hook root thickness at the tip (claw thickness K) [mm]	3,5 mm
J	Hook base width (claw width J) [mm]	16 mm
O	Hook base depth usable (claw depth usable O) [mm]	13 mm
H	Total hook root depth (total claw depth H) [mm]	26 mm
L	Total claw thickness (L+1mm) (claw distance to base) [mm]	10 mm
Emin	Span inside pull-out (min.) [mm]	
Emax	Span inside pull-out (max.) [mm]	
Tmax	Max. torque [Nm]	20 Nm
Fmax	Max. tractive force [t]	2 t
Fmax	Max. tensile force [kN]	20 kN
S1	Width across flats connecting nut [mm]	

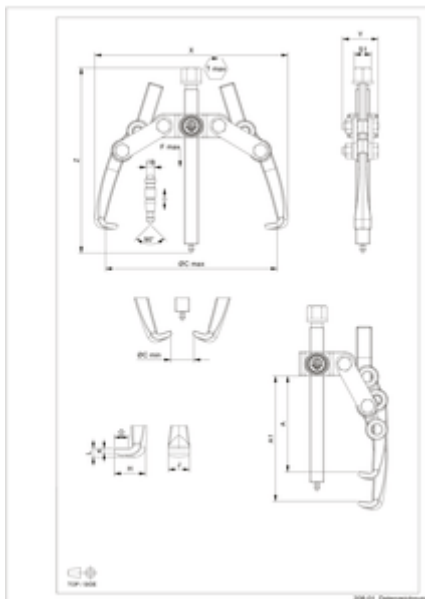


Abbreviation	Attribut	Wert
X	Total width [mm]	196 mm

Y	Total depth [mm]	30 mm
Z	Total height [mm]	181 mm
A	Clamping depth outside pull-off [mm]	95 mm
S1	Width across flats [mm]	17 mm
Cmin	Span outside pull-off (min.) [mm]	0 mm
Cmax	Span outside pull-off (max.) [mm]	170 mm
K	Hook root thickness at the tip (claw thickness K) [mm]	3,5 mm
J	Hook base width (claw width J) [mm]	16 mm
O	Hook base depth usable (claw depth usable O) [mm]	13 mm
H	Total hook root depth (total claw depth H) [mm]	26 mm
L	Total claw thickness (L+1mm) (claw distance to base) [mm]	10 mm
Emin	Span inside pull-out (min.) [mm]	
Emax	Span inside pull-out (max.) [mm]	
Tmax	Max. torque [Nm]	20 Nm
Fmax	Max. tractive force [t]	2 t
Fmax	Max. tensile force [kN]	20 kN
S1	Width across flats connecting nut [mm]	



Abbreviation	Attribut	Wert
X	Total width [mm]	196 mm
Y	Total depth [mm]	30 mm
Z	Total height [mm]	181 mm
A	Clamping depth outside pull-off [mm]	95 mm
S1	Width across flats [mm]	17 mm
Cmin	Span outside pull-off (min.) [mm]	0 mm
Cmax	Span outside pull-off (max.) [mm]	170 mm
K	Hook root thickness at the tip (claw thickness K) [mm]	3,5 mm
J	Hook base width (claw width J) [mm]	16 mm
O	Hook base depth usable (claw depth usable O) [mm]	13 mm
H	Total hook root depth (total claw depth H) [mm]	26 mm
L	Total claw thickness (L+1mm) (claw distance to base) [mm]	10 mm
Emin	Span inside pull-out (min.) [mm]	
Emax	Span inside pull-out (max.) [mm]	
Tmax	Max. torque [Nm]	20 Nm
Fmax	Max. tractive force [t]	2 t
Fmax	Max. tensile force [kN]	20 kN
S1	Width across flats connecting nut [mm]	



Abbreviation	Attribut	Wert
X	Total width [mm]	196 mm
Y	Total depth [mm]	30 mm
Z	Total height [mm]	181 mm
A	Clamping depth outside pull-off [mm]	95 mm
S1	Width across flats [mm]	17 mm

Cmin	Span outside pull-off (min.) [mm]	0 mm
Cmax	Span outside pull-off (max.) [mm]	170 mm
K	Hook root thickness at the tip (claw thickness K) [mm]	3,5 mm
J	Hook base width (claw width J) [mm]	16 mm
O	Hook base depth usable (claw depth usable O) [mm]	13 mm
H	Total hook root depth (total claw depth H) [mm]	26 mm
L	Total claw thickness (L+1mm) (claw distance to base) [mm]	10 mm
Emin	Span inside pull-out (min.) [mm]	
Emax	Span inside pull-out (max.) [mm]	
Tmax	Max. torque [Nm]	20 Nm
Fmax	Max. tractive force [t]	2 t
Fmax	Max. tensile force [kN]	20 kN
S1	Width across flats connecting nut [mm]	